

testingexpress™ ◇ Biomarker Testing Service

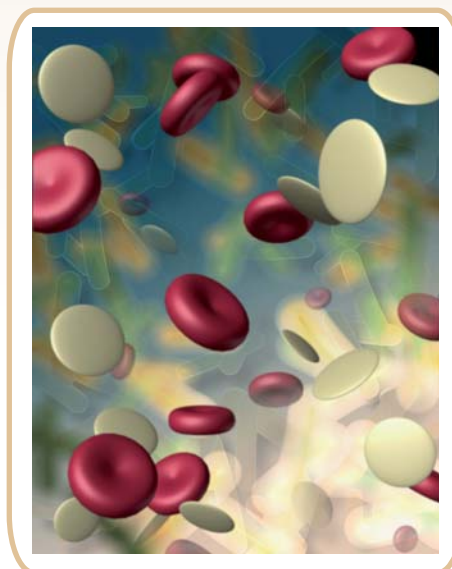
“Build a protein assay once – use it forever.”

testingexpress™ Features:

- Protein assay services for:
 - o Monitoring of biomarkers in pre-clinical and clinical samples
 - o Verification and validation of putative biomarkers
- High multiplexing capabilities in a single assay
- Low sample volumes/amounts required
- High specificity for targeted proteins without affinity reagents

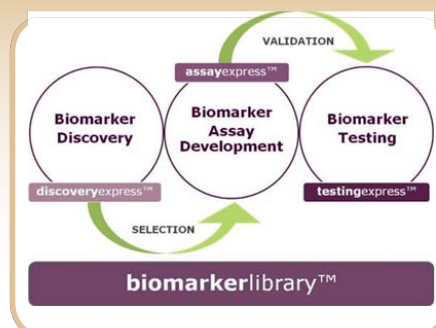
Once an assay is developed for the targeted protein, NextGen will test samples and provide the biomarker data to help with decisions for your project.

- Assay Panels
 - o Disease Area Panels
 - o Pathway Panels
 - o Safety Panels
 - o Custom Panels
- Pathway Analysis
- Safety Assessment
- Patient Selection and Stratification
- Monitor Response
- Determine Efficacy
- Off-target Pharmacology
- Monitor Protein Therapy
- Detect Disease



biomarkerexpress™ services

NextGen Sciences, Inc has developed a suite of biomarker services to significantly decrease timelines and increase the success rates traditionally associated with the various stages of biomarker development.

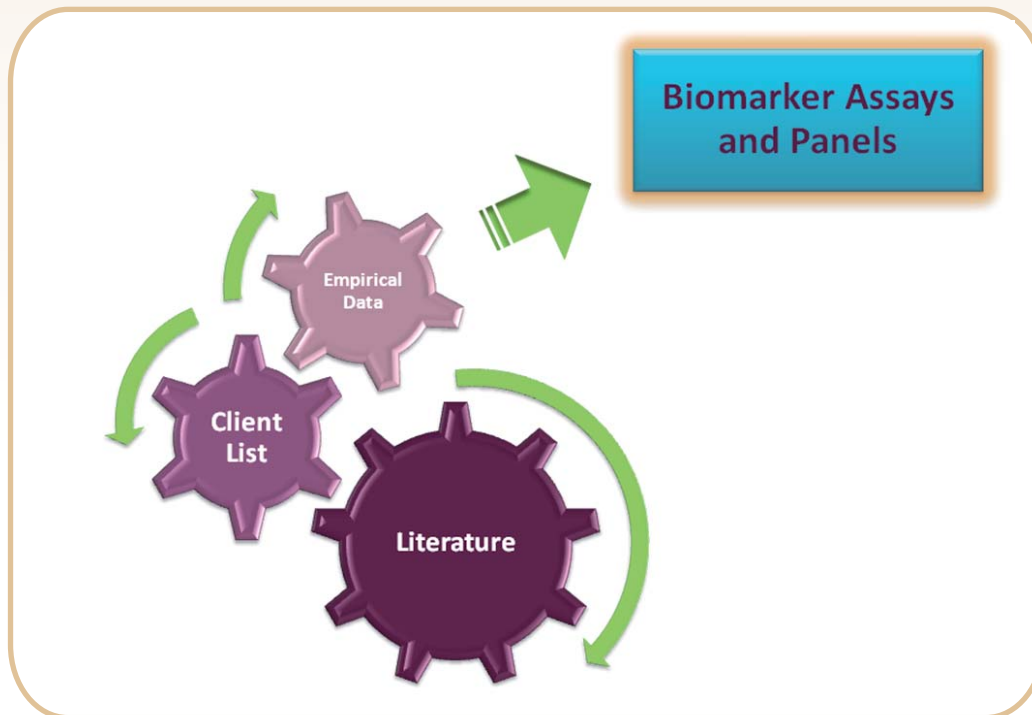


biomarkerlibrary™ ◇ Biomarker Knowledgebase

NextGen Sciences has developed a service to aid researchers and clinicians in selecting the right biomarkers for each R&D program. Predictive sciences (the 'omics) are enabling the switch from broad spectrum therapies to personalized medicine. The use of biomarkers is the key to the success of this dramatic shift in medical sciences. In many cases the most challenging task is selecting the appropriate biomarkers for each specific program.

biomarkerlibrary™ Features:

- Indexed information-rich proteome maps
- Biomarker literature collection
- Assay Panels
 - Disease Area Panels
 - Pathway Panels
 - Safety Panels
 - Custom Panels



Email or call us to discuss your list of putative biomarkers.

NextGen Sciences

USA toll free: 866-973-7914

tel: 734-973-7914

biomarkers@nextgensciences.com